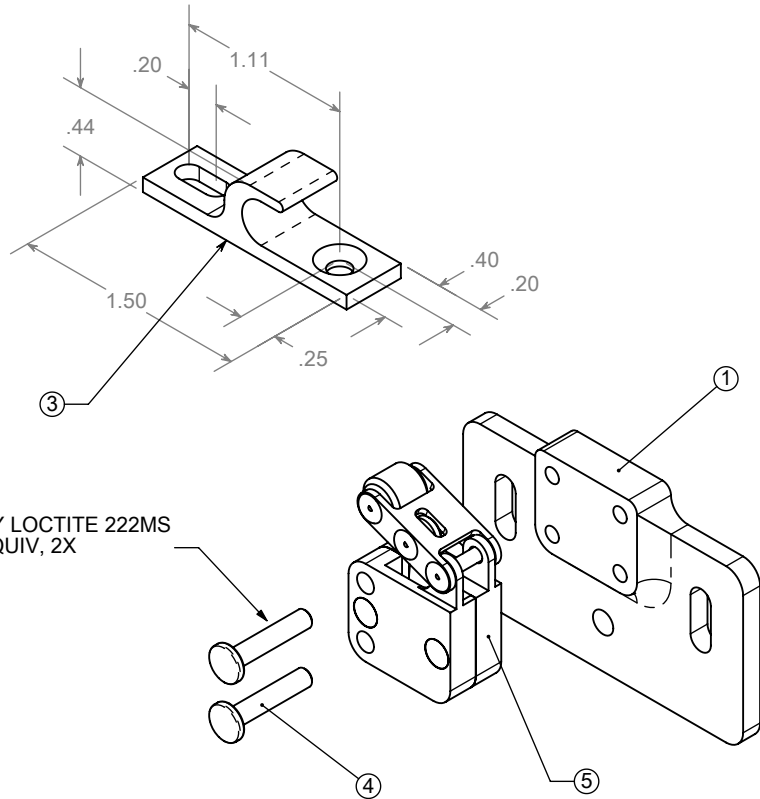


THE INFORMATION CONTAINED IN THIS DRAWING IS THE SOLE PROPERTY OF Saint Louis Designs, Inc. ANY REPRODUCTION IN PART OR WHOLE WITHOUT THE WRITTEN PERMISSION OF Saint Louis Designs, Inc. IS PROHIBITED.

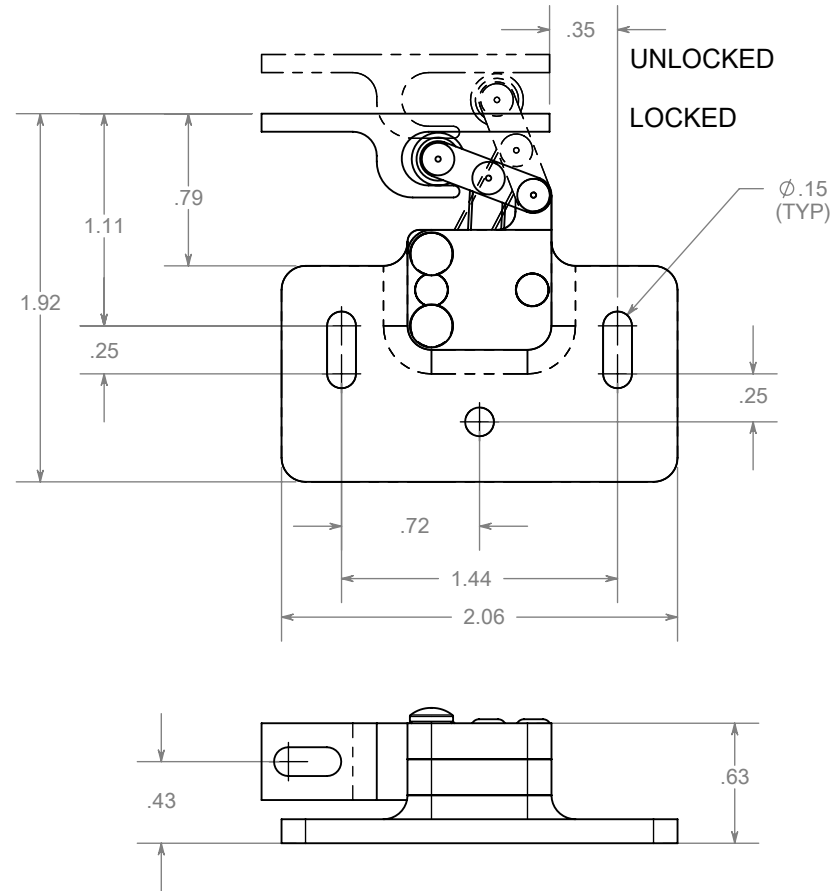
REVISIONS		DATE
IR	INITIAL RELEASE	1/19/2000
A	INCREASED ROLLER DIAMETER, FROM $\phi .25$ TO $\phi .27$; PN:1006 REPLACED PN:13SP039B IN BOM	3/5/2000
B	REDRAWN IN NEW SOFTWARE; NO BOM CHANGE	5/22/2000
C	REDRAWN WITH SOFTWARE UPGRADE, NEW ASSEMBLY RELATIONS; NO BOM CHANGE	5/27/2000
D	PN: 1007 REV. E; MS20426AD3-8 REPLACED CCR264SS3-4, WITHIN PN: TL1000	2/05/2001
E	REDUCED QTY MS20426AD3-8 FROM 3 TO 2	12/16/2004
F	TL1000 REPLACED WITH TL1000-T, DOES NOT AFFECT ANY PRIOR INSTALLATIONS	7/10/2006

NOTES:

1. INSTALL CATCH USING ONE (1) NAS601 AND ONE NAS514-632 SCREWS.
2. INSTALL LATCH USING THREE (3) NAS601 SCREWS.
3. REQUIRED TRAVEL TO UNLOCK: 0.15"
4. LATCH CAN BE USED LEFT OR RIGHT HAND ON MOUNT PLATE.
5. RECOMMENDED USE WITH EXTERNAL PUSHER.
6. ASSEMBLY INCLUDES MOUNT PLATE AND CATCH.



ITEM NO.	QTY.	PART NO.	DESCRIPTION
1	1	1011	MOUNT PLATE
3	1	1012	CATCH
4	2	NAS600-9P	SCREW, PH
5	1	TL1000-T	TOUCH LATCH



UNLESS OTHERWISE SPECIFIED DIMENSIONS ARE IN INCHES TOLERANCES ARE: .XX = $\pm .010$.XXX = $\pm .005$ ANGULAR = $\pm 1^\circ$ SURFACE = 32 RMA OR BETTER	CAD GENERATED DRAWING. DO NOT MANUALLY UPDATE.		Saint Louis Designs, Inc. P.O. BOX 3400, AUSTIN, TX 78764 (800) 431-6684, info@saintlouisdesigns.com	
	APPROVAL	DATE		
MATERIAL SEE PROPRIETARY PART DETAILS	DRAWN	MSTL	7/10/06	MICRO TOUCH LATCH ASSEMBLY 70 Lbs Ultimate load, 30 Grams
	CHECKED			
FINISH SEE PROPRIETARY PART DETAILS	SIZE	PART # TL1000RMP		
	DO NOT SCALE DRAWING	SCALE:	CAD FILE:	SHEET 1 OF 1