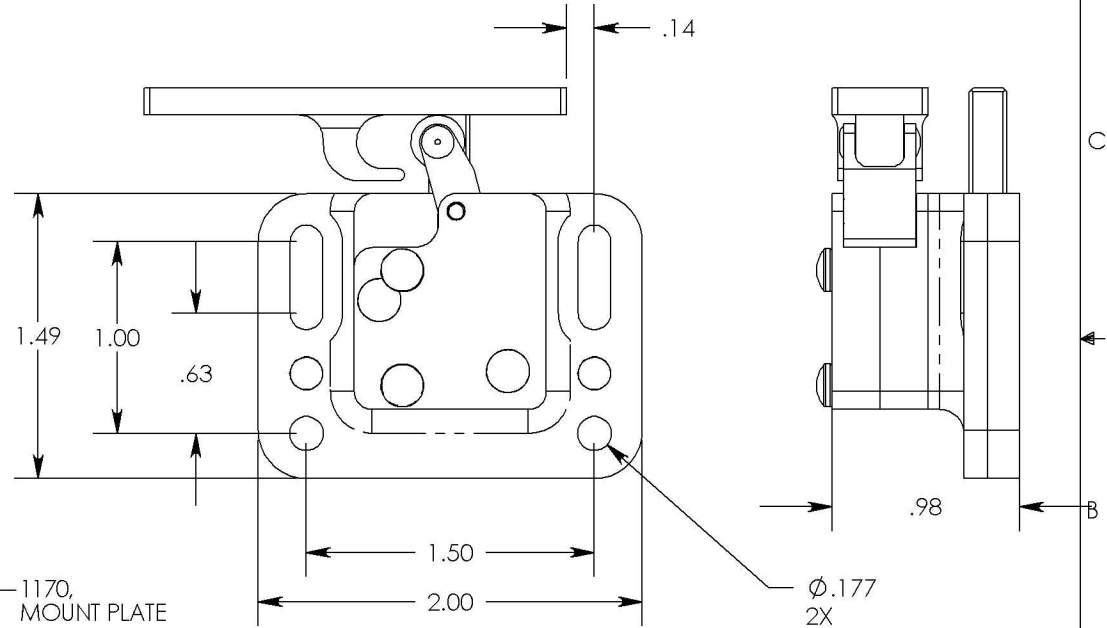
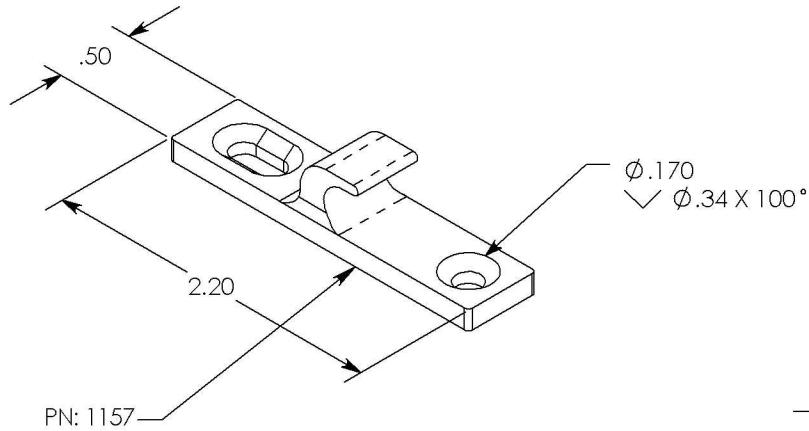
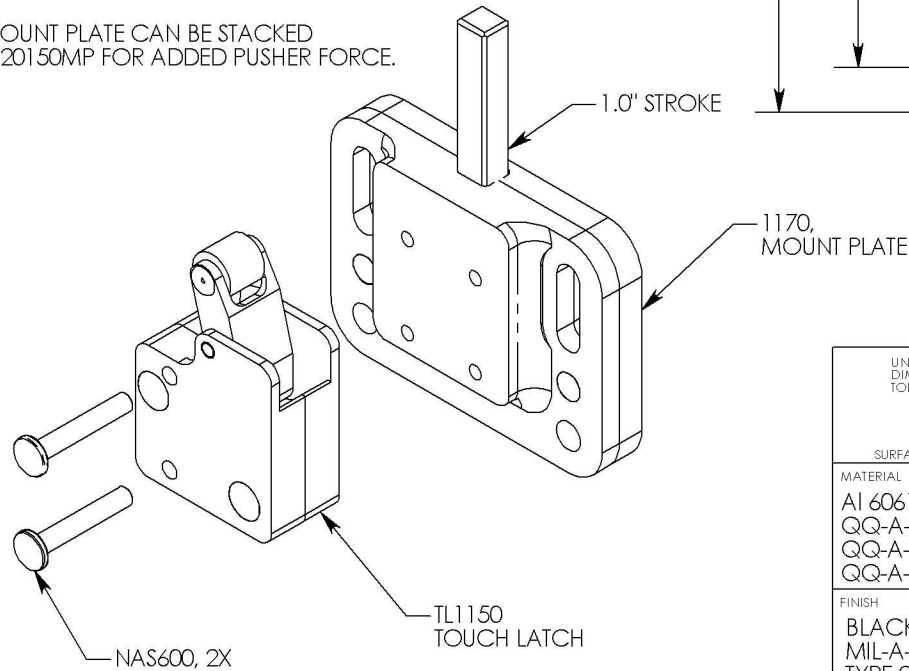


THE INFORMATION CONTAINED IN THIS DRAWING IS THE SOLE PROPERTY OF Saint Louis Designs, Inc. ANY REPRODUCTION IN PART OR WHOLE WITHOUT THE WRITTEN PERMISSION OF Saint Louis Designs, Inc. IS PROHIBITED.

REVISIONS		DATE
IR	INITIAL RELEASE	



PUSHER MOUNT PLATE CAN BE STACKED WITH P/N: 20150MP FOR ADDED PUSHER FORCE.



UNLESS OTHERWISE SPECIFIED DIMENSIONS ARE IN INCHES TOLERANCES ARE:

XX = $\pm .010$
 XXX = $\pm .005$
 ANGULAR = $\pm 1^\circ$
 SURFACE = 32 RMA OR BETTER

CAD GENERATED DRAWING. DO NOT MANUALLY UPDATE.

MATERIAL
 Al 6061-T6
 QQ-A-200/8
 QQ-A-200/16 or ASTM-B-221
 QQ-A-250/11 or ASTM-B-209

FINISH
 BLACK ANODIZE
 MIL-A-8625F
 TYPE 2, CLASS 2

APPROVAL	DATE
DRAWN MSTL	4/15/2002
CHECKED	

Saint Louis Designs, Inc.

P.O. BOX 3400, AUSTIN, TX 78764

(800) 431-6684, st-louis@texas.net

TOUCH LATCH / PUSHER
 WEIGHT: 61 Grams
 LOAD: 300 Lbs Plus
 5 Lbs PUSHER MOUNT

SIZE PART #
 A 1170

DO NOT SCALE DRAWING

SCALE: CAD FILE:

SHEET 1 OF 1