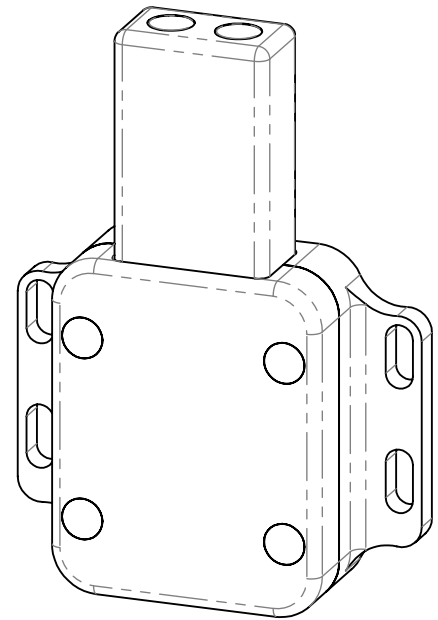
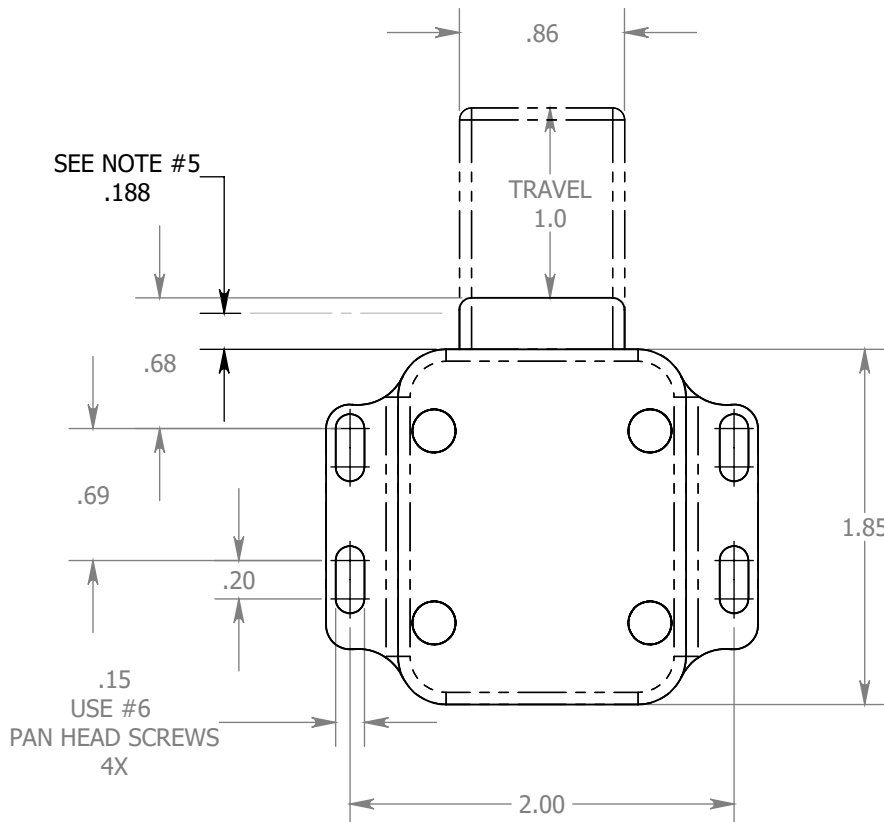
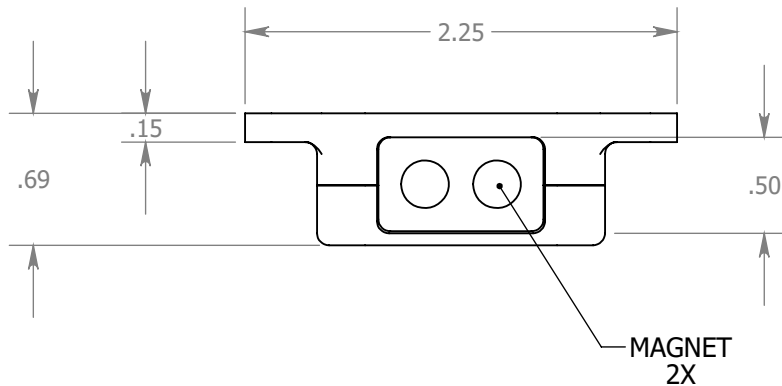
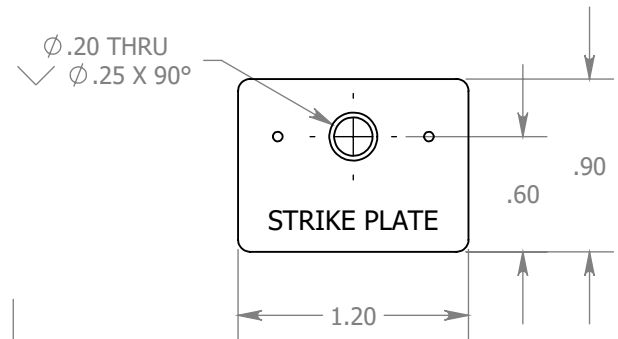


NOTES:

1. SPRING FORCE: 10 Lbs
2. MAGNETIC PULL: 6 Lbs
3. TRAVEL REQUIRED TO UNLOCK: 0.08" (2MM)
4. STRIKE PLATE PROVIDED,
INSTALL USING #6 FLAT HEAD SCREW
USE #6 PAN HEAD SCREWS TO FASTEN LATCH
TO STRUCTURE.
5. * A STOP-BLOCK OR DOOR-STOP MUST BE USED.
LOCATE 0.187" FORWARD OF THE LATCH,
ADJUST LATCH LOCATION USING FASTENER
SLOTS.

REVISIONS		DATE
IR	INITIAL RELEASE	3/15/05
A	REMOVED CORNERS FOR MFG PROCESS	9/15/2013
B	NOTE 5 ADDED	20200424



<div>PROPRIETARY AND CONFIDENTIAL</div> <div>THE INFORMATION CONTAINED IN THIS DRAWING IS THE SOLE PROPERTY OF SAINT LOUIS DESIGNS. ANY REPRODUCTION IN PART OR AS A WHOLE WITHOUT THE WRITTEN PERMISSION OF SAINT LOUIS DESIGNS IS PROHIBITED.</div>		<div>UNLESS SPECIFIED OTHERWISE DIMENSIONS ARE IN INCHES</div> <div>TOLERANCES:</div> <div>ANGULAR: ±1°</div> <div>TWO PLACE DECIMAL ±0.01</div> <div>THREE PLACE DECIMAL ±0.005</div> <div>SURFACE FINISH: 32 RMA</div>		NAME	DATE	<div>Saint Louis Designs, Inc.</div> <div>PO BOX 3400, Austin, TX78764</div> <div>512-472-4711, www.saintlouisdesigns.com</div>			
				DRAWN	MSTL			3/15/05	
				CHECKED					
					ENG APPR.			<div>PUSHER, LATCHING</div>	
					MFG APPR.	MSTL	3/15/05		
				Q.A.					
				COMMENTS:					
				MATERIAL	VARIOUS		<div>PATENT: 6,669,250</div> <div>SIZE DWG. NO. 20125LP</div> <div>SCALE:1:1 WEIGHT: SHEET 1 OF 1</div>		
	DEBUR AND BREAK SHARP EDGES			FINISH	ANODIZED BLACK OR CLEAR				
				DO NOT SCALE DRAWING					