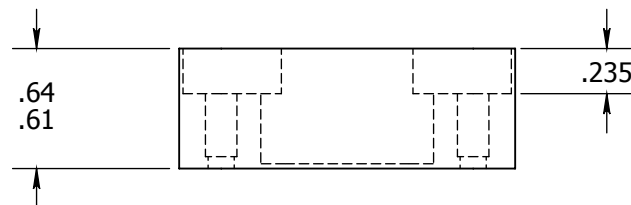
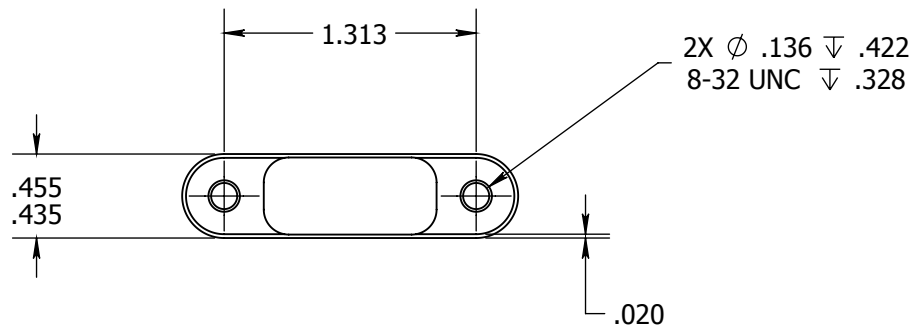
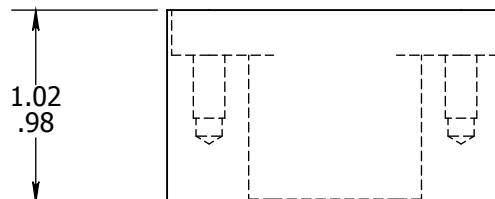


REVISIONS		DATE
IR	INITIAL RELEASE	4/2002
A	INCREASED INTERNAL CLEARANCE	10/2011
B	TITLE BLOCK UPDATES	7/2014
C	TOLERANCE EDITS	20180810



MB105



MB105-EX

# NOTE:

1. BLACK ANODIZE FINISH IS STANDARD
2. SPECIFY WHEN ORDERING IF GOLD ALODINE IS PREFERRED.

<p><b>PROPRIETARY AND CONFIDENTIAL</b></p> <p>THE INFORMATION CONTAINED IN THIS DRAWING IS THE SOLE PROPERTY OF SAINT LOUIS DESIGNS. ANY REPRODUCTION IN PART OR AS A WHOLE WITHOUT THE WRITTEN PERMISSION OF SAINT LOUIS DESIGNS IS PROHIBITED.</p>			UNLESS SPECIFIED OTHERWISE DIMENSIONS ARE IN INCHES TOLERANCES: ANGULAR: ±1° TWO PLACE DECIMAL ±0.015 THREE PLACE DECIMAL ±0.010 SURFACE FINISH: 32 RMA		NAME	DATE	<p><b>Saint Louis Designs, Inc.</b></p> <p>PO BOX 3400, Austin, TX78764</p> <p>512-472-4711, www.saintlouisdesigns.com</p>			
					DRAWN	MSTL				7/22/2014
					CHECKED					
					ENG APPR.					
					MFG APPR.	MSTL				7/22/2014
				MATERIAL 7075-T651 QQ-A-225/8	Q.A.			<p><b>HINGE MOUNT BLOCKS</b></p>		
				COMMENTS:						
	DEBUR AND BREAK SHARP EDGES		FINISH BLACK ANODIZE MIL-A-8625, TYPE 2 CLASS 2							
			DO NOT SCALE DRAWING							
			SIZE <b>A</b>	DWG. NO. <b>MB105 &amp; MB105-EX</b>		REV. <b>C</b>				
			SCALE: 1:1		WEIGHT: 0.02		SHEET 1 OF 1			